



Miami Heat Pump

20233 N.E. 15th Court Miami Fl, 33179

Phone (866)407-8535 * Fax (866)406-6603

Website: www.miamihp.com * Email: customerservice@miamihp.com

UNIT SPECIFICATION DATA SHEET

UNIT MODEL

HPHWW150 SS -
12.0 TON Water To Water Heat Pump

FEATURE INFORMATION

CABINET - Stainless Steel
COND. COIL - Coaxial - Cupronickel
COND FANS - N/A
EVAP. COIL - Coaxial Tube in Tube Cupronickel
COMPRESSOR- Copeland Scroll
REF. CIRCUITS - 2 Independent Circuit
SAFETY - High/Low Press. Switches, Overload Protection, Anti-Freeze Protection, Time Delay,
 Lock-out Relay, Phase Monitor and Voltage Protection
& CONTROL 24 Volt,

UNIT PERFORMANCE

WATER LOOP

COOLING		HEATING	
Indoor Side	53.6 ° F	Indoor Side	104 ° F
Geothermal side	50 ° F	Geothermal Side	68 ° F
BTUH	EER	BTUH	COP
129,700	13.7	167,800	4.3

GROUND WATER LOOP

COOLING		HEATING	
Indoor Side	53.6 ° F	Indoor Side	104 ° F
Geothermal side	59 ° F	Geothermal Side	50 ° F
BTUH	EER	BTUH	COP
135,100	18.2	111,600	2.8

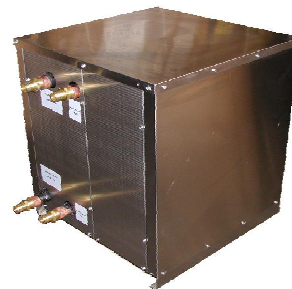
GROUND LOOP

COOLING		HEATING	
Indoor Side	53.6 ° F	Indoor Side	104 ° F
Geothermal side	59 ° F	Geothermal Side	32 ° F
BTUH	EER	BTUH	COP
129,600	14.9	111,600	2.8

WATER FLOW (Geothermal Side): GPM - 35.0
WATER FLOW (Application Side): GPM - 28.0
WATER LINE DIAMETER: INCHES - 1.5
MIN AMP. / MAX FUSE - AMPS. - 72/100
VOLTAGE RATING / PHASE / HERTZ - 208-230/1/60
DIMENSION W" X L" X H" - 46 X 28 X 25
WEIGHT - NET - 620

NOTE: WATER TEMPERATURE RANGE 40°F - 130°F

1. UNIT IS SUBJECT TO CHANGE WITHOUT NOTICE
2. UNIT IF AVAILABLE IN DIFFERENT CONFIGURATIONS AND VOLTAGE RATINGS



UNIT WATER TEMPERATURE EXTENDED RANGE: 40 °F-125 °F
RATINGS ARE BASED ON AHRI STANDARD BASE SPECIFICATION DATA.